

Presented By



A Gateway Arts Production

BRAINSTORM

A play that explains why teens act like...teens



Original Script by Ned Glasier, Emily Lim and Company Three

Adapted by Cheyenne Alexandria Phillips

Directed by Samantha Scott-Blackhall

16 - 26 October 2025
Gateway Theatre, Black Box

Synopsis

Inside every adolescent brain, a storm rages. 86 billion neurons connect and collide to produce the most frustrating, chaotic, and exhilarating change that will happen to a human body!

Brainstorm, directed by Samantha Scott-Blackhall, is an original script by Ned Glasier, Emily Lim and Company Three. It's a unique theatrical investigation into how teenagers' brains work, and why they behave the way they do. Inspired by the work of neuroscientist Professor Sarah-Jayne Blakemore and adapted by Cheyenne Alexandria Phillips, this play draws upon the real-life personal experiences of Singapore's 13- to 17-year-olds. It is a tumultuous teenage diary of likes and hates, a tapestry of dreams, memes, fears, voices, emojis, school-things, parent-things and life-things.



Message From Our Executive Producer

Welcome to *Brainstorm*.

This show was shaped with Singaporean youths and the science of the teenage brain. It doesn't point fingers; it opens doors. At Gateway Arts, we believe stories do quiet, brave work—opening hearts, giving language to hard feelings, and creating room to listen.

With the support of Singapore Pools (Private) Limited, our presenting sponsor, we're able to continue this work—bringing theatre that starts real conversations and builds bridges between generations. When the lights dim and a story begins, something tender happens: teens and adults meet halfway. That's why it matters to us—art that starts real conversations, with post-show discussion and resources so no one leaves carrying big feelings alone.

It matters to me as a parent, too. I'm learning to slow down, to trade fixing for curiosity, and to remember that behaviour is often a message. Adolescence isn't a problem to solve; it's a season to guide—with patience, boundaries, and love. And as I think about all this, I can't help but think of my two growing hearts at home.

To my tween and big teen: I love you more than words. I will cheer your courage, be a soft landing when days feel sharp, and keep learning how to listen—even



when I get it wrong first. Growing up is big, beautiful, and messy, and I'll keep walking beside you. You are, and always will be, my loves. If you carry just one thing home today, let it be this: connection changes everything.

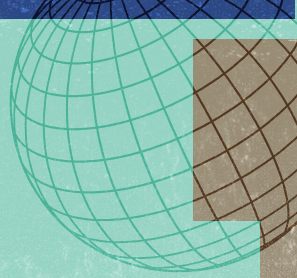
And if there's room for a few more:

- A shared language for what's happening in the teenage brain—reward, impulse, belonging, and why it can all feel “extra.”
- A little more empathy and kindness, fewer assumptions.
- One small practice this week: a device-free check-in, a gentle “tell me more,” or a quiet sit together when words are hard.

Thank you for being here, for choosing presence over judgment, and for lending your ears and hearts. After the curtain call, stay and talk with us. Hope grows when we keep talking—and keep listening.

Priscilla Khong

Message From Our Director



The making of *Brainstorm* has been just that; a storm of ideas and points-of-views, of science-things, play-things, trending-things, along with the turbulent physical, emotional and mental changes that hit at adolescence. A hard (Singaporean) truth encountered by teens is the pressure to perform, stemming from the adults in their lives—to “succeed”, “do better”, “study hard”, “study harder”, “excel” ...all while navigating teenage politics, making “real” friends and surviving their changing bodies. These unsympathetic pressures often culminate in stress, social anxiety, fear of failure and depression. But, despite these unwelcome aspects, *Brainstorm* also depicts anticipation, self-discovery and individual growth—itsself worthy of celebration. This simple and honest presentation is the open diary of six teenagers, aged 13-17 years, (and every teen they represent), and you are invited to “read” it with curiosity and without judgement.

Here’s what I’ve learnt along the way: the science of a teen brain is important! Listen and don’t judge. Be present. See potential. Praise. Encourage passion, and always be kind.

I’m so grateful to everyone who came alongside to tell this story, especially all the young people that lent their stories and perspectives towards the making of this

play: your unique contribution will elevate a generation that needs to be heard. Starting with our Playwright-Adapter, Cheyenne Alexandria Phillips, whose heart for teens and young people extends beyond this play into every facet of her career and craft, thank you Cheyenne for changing the world for good! Designers: Genevieve, Daniel, Enqi and Petrina (new mummy to her own future teen!) Thank you for being the glue to this story; transporting us, painting layers, adding nuance and style. Our Production and SM team, what are we without you?! Thank you for minding all the details and keeping us on track, for your dedication and big hearts. To our Gateway Arts team that work quietly but fiercely in the background, thank you for your belief in a cause bigger than yourselves.

Finally, a huge thank you to my passionate, energetic, hardworking, (nonsense!) and loving cast; Hani, Matthias, Sara, Cheryl, Shen Hao, Kishore, Jeoshua and Adrina! Not just talented actors and storytellers, your input has embellished the play and brought it to life!

To my Ma and Pa, and my drama teachers from school and Uni, who, in my teen years, encouraged my love for theatre, thank you, for pushing that petite bespectacled “drama kid” towards her dreams. I got here because of you ❤️

Samantha Scott-Blackhall



Rewiring In Progress

The Teenage Brain

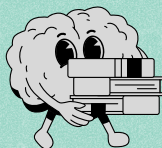
Did you know that the brain undergoes its most dramatic changes during adolescence? Even though by the age of six, the brain is already 90% of its full adult size, but size does not equate to maturity. During the teenage years and into early adulthood, how we think, feel, and respond shifts significantly as the brain rewires (or develops).

WHY DO TEENAGERS BEHAVE THE WAY THEY DO?

Teenagers are often described as moody, impulsive, or rebellious. While there is some truth to these observations, there is also science behind them. In the next section, we will explore the brain systems that fuel the intensity, creativity and unpredictability of adolescence.

LET'S MEET YOUR TEENAGE BRAIN!

Your brain is like a cast of characters working together – sometimes in harmony, sometimes in chaos. During the teen years, these characters are still figuring out their roles.

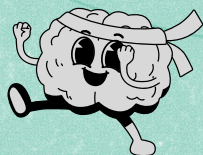


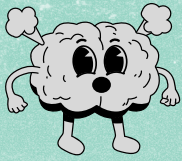
THE PLANNER (PREFRONTAL CORTEX)

The sensible one: plans, weighs risks, and stays organised. In adolescence, The Planner is still “in training,” which is why it can sometimes be overruled.

THE RINGLEADER (LIMBIC SYSTEM)

The emotional hub and social stage manager. The Ringleader rallies The Emotion Amplifier and The Reward Chaser, making feelings and friendships feel larger than life. During the teen years, this system buzzes with energy.



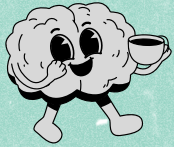
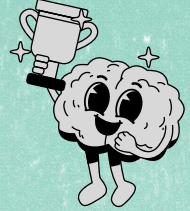


THE EMOTION AMPLIFIER (AMYGDALA)

Big feelings, all the time! Excitement, anger, fear and love – The Emotion Amplifier makes everything feel intense. During the teenage years, The Emotion Amplifier often grabs the steering wheel before The Planner has time to think.

THE REWARD CHASER (DOPAMINE SYSTEM)

Loves thrills, risks, and anything new. Gets super hyped up about TikTok likes, gaming wins, or hanging out with friends. This can supercharge motivation (sports, arts, learning) but can also nudge risky choices.

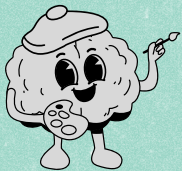
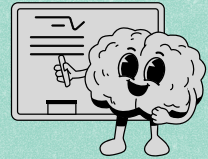


THE NIGHT OWL (SLEEP CYCLE)

Wants to stay up late and hates early mornings. Melatonin (the “sleepy signal”) rises later than adults, which is why 11pm feels like 8pm for youths.

THE GARDENER (SYNAPTIC PRUNING)

Cuts back unused connections while strengthening and growing the ones you practice. The Gardener decides which habits and skills stay for life.

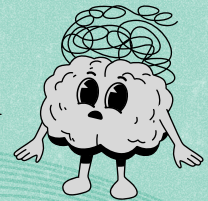


THE CREATIVE SPARK (NEURAL CONNECTIONS)

Loves experimenting, imagining, and seeing possibilities adults might miss. This is why teens are often more inventive and open-minded.

THE ALARM BELL (STRESS HORMONES)

Extra sensitive in the teenage years, ringing loudly when anxious, pressured or upset. It can make small problems feel huge, but also mobilises energy and motivation to push through challenges.



THE PLOT TWIST

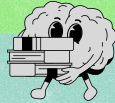
Sometimes your cast clashes—The Emotion Amplifier drowns out The Planner, The Reward Chaser teams up with The Night Owl, and The Alarm Bell sets everyone off. Meanwhile, The Ringleader keeps them buzzing with energy.

That's the adventure of the teenage brain: intense rewiring, rapid growth, and discovery – when your cast is learning to work together to become a unique version of you.

TIPS TO HELP YOUR BRAIN CAST WORK TOGETHER

Your brain characters don't always agree – but here's how you can help them stay in sync:

Help The Planner (Prefrontal Cortex) win



Before making big decisions, pause and ask: “What happens next?” Writing it down or talking it out gives The Planner time to catch up.

Calm The Emotion Amplifier (Amygdala) when emotions get overwhelming



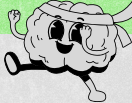
Try the 5-4-3-2-1 grounding exercise. Identify 5 things you can see, 4 things you can touch, 3 things you can hear, 2 things you can smell, and 1 taste that you recall. This helps emotions settle.

Help The Night Owl (Sleep Cycle) rest better



Dim lights and put away screens an hour before bed. Even 20 minutes of extra sleep can help mornings feel easier.

Keep The Ringleader (Limbic System) balanced



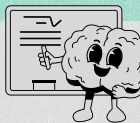
The Ringleader loves drama and friendship – so check in with yourself: “Am I reacting to the moment, or to how it feels?” Taking a breath before responding helps The Ringleader and The Planner work together.

Steer The Reward Chaser (Dopamine System) towards wins that matter



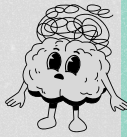
Channel the craving for thrills into safe challenges – sports, arts, gaming goals, or trying something new. Pick rewards that build you up, not tear you down.

Choose what The Gardener (Synaptic Pruning) grows



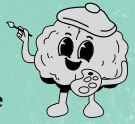
Every time you practice a skill, your Gardener strengthens it. Want to learn guitar, coding, or a new language? Repetition tells The Gardener: “Keep this!”

Quiet The Alarm Bell (Stress Hormones) when it's too loud



Move your body – stretch, dance, or walk it out. Physical activity resets your stress system and lets The Planner take charge again.

Let The Creative Spark (Neural Connections) shine



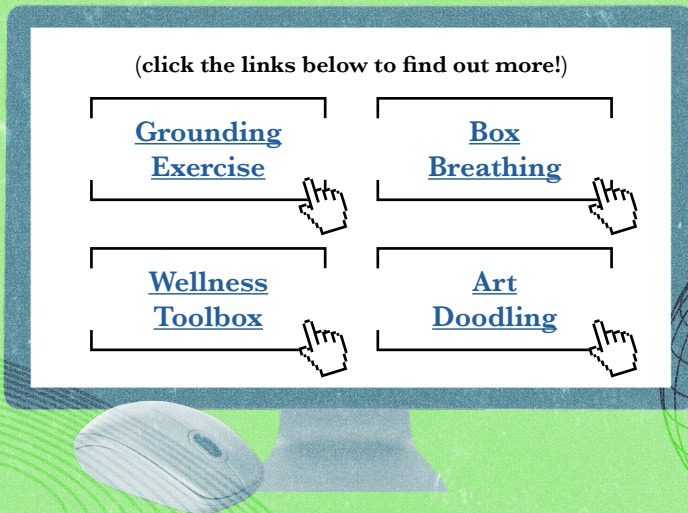
Capture ideas in a notes app, doodle, or voice memo. Don't dismiss anything – even “weird” ideas can lead to your best breakthroughs.

NO ONE CHARACTER IS “BAD”

Together, the teenage brain cast are learning to work as a team – and that team is becoming uniquely you.

COPING STRATEGIES FOR THE BRAIN

Here are some simple ways to help your brain stay calm, focused, and balanced:



If you need support beyond these strategies, don't hesitate to reach out. Your mental health matters as much as your academic and personal growth. CREST-Youth by TOUCH Community Services offers fully funded mental health support for Singapore youths aged 12–25.

[Q Learn More Here](#)



BRIDGING THE GAP BETWEEN TEENAGERS AND ADULTS

Understanding the teen brain helps adults see that mood swings, risk-taking, or needing more sleep aren't "attitude"—they're part of a developing brain. For teens, it's reassuring to know adults may misread actions because brains work differently. When both sides recognise this, conversations shift from blame to curiosity, patience, and support.

THE ROLE OF ADULTS IN TEEN DEVELOPMENT

As thinking skills accelerate, teens still learn through modelling and trial-and-error. Parents, carers, teachers, and mentors play a crucial role by setting examples, offering structure, and staying emotionally available.

SUPPORTING YOUR TEEN

- **Encourage independence** — Offer age-appropriate choices and autonomy within safe boundaries.
- **Lead by example** — Be open about your mistakes; show how you take responsibility and what you'll do differently next time.
- **Discuss, don't dismiss** — Invite opinions. If you disagree, ask them to explain their view and listen with curiosity.
- **Be an emotional anchor** — When emotions run high, focus on the feeling beneath the behaviour. Offer patience, reassurance, and space to cool off.
- **Balance work and play** — Keep joyful activities going, even during exams. Breaks prevent overwhelm and can improve focus.

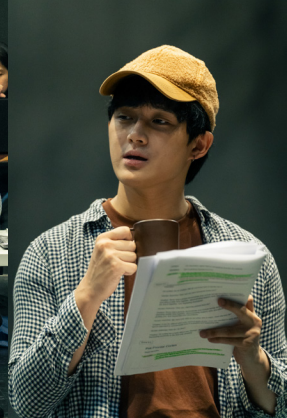
PARENTING SUPPORT

Parenting is a lifelong journey—rewarding, but rarely easy. TOUCH Parenting offers evidence-based programmes with workshops, practical strategies, and guidance.



[Find Out More Here](#)





Meet The Cast

ROHANIAH SA'ID (HANI)

Qistina

Hani is a graduate from LASALLE College of the Arts with a BA (Hons) in Musical Theatre and Diploma in Performance. She's passionate about using her work to uplift underrepresented voices and bring more diverse stories to the stage. Her recent projects include *RICE BOWL!* (2021), *Dr. Faustus* (2024), *Don't Call Him Mr. Mari Kita* (2024), Wild Rice's *The Wizard of Oz* (2024), and *Much Ado About Nothing* (2025). She's excited to keep growing and finding her voice in theatre.



CHONG SHEN HAO

Jeffery

Chong Shen Hao is a Singapore-based theatre artist who enjoys creating performances that test the boundaries of the arts and theatre. He co-founded n:ow arts, an experimental collective seeking to expand the vocabulary of performance-making. His acting credits include *PE*IS* (2025) at Centre 42, and *Stage Fright!* (2025), directed by Chong Tze Chien. As a performer-creator, he has also created *I(n) Nature* (2025) and *dear cfa*, (2024).

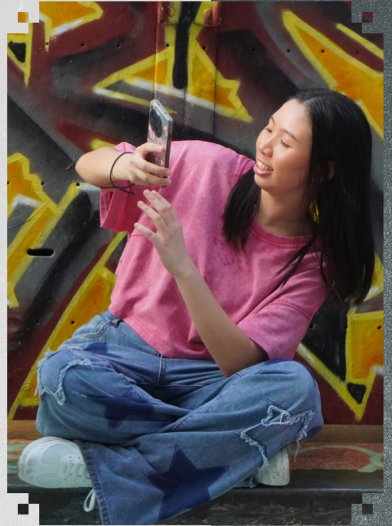
He was educated at the National University of Singapore, holding a degree in Philosophy and Theatre Studies.



SARA CHER

Hannah

Sara Cher is an actress with a passion for interactive stage performance. Her previous works include *Too Much Light Make The Baby Go Blind* (Wag The Dog Theatre), *Stranger Things: The Experience* (Lucid Experience), *16 in 10 Minutes or Less* (Poly Stage Factor), *Machinal* (Poly Stage Factor). She also works with young children as a speech and drama trainer, helping them to better articulate their emotions and thoughts through engaging activities such as storytelling, games and songs.



CHERYL LEE

June

Cheryl Lee is a bilingual actor for stage and screen. Selected theatre credits include *Playing With Fire* (Checkpoint Theatre); *People* (Wild Rice), *Stranger Things: The Encounter* (Mighty Jaxx) and *Banh Mi On The Roof & Till The Lights Come On: A Double Bill of Serious Comedy* (MoreLife Theatre). Selected screen credits include *Way Back When* (The Bruh Collective, won Best Performance for Series & Pilot at the Asia Web Awards), *Last Madame: Sisters of the Night* (Ochre Pictures) and 《游乐场》 (Threesixzero Productions).



KISHORE KUMAR

Aarav

Kishore Kumar is a bilingual actor who loves telling stories in both Tamil and English. He's in his final year of BA (Hons) Acting at LASALLE College of the Arts, where he also graduated with a Diploma in Performance. Kishore has a big soft spot for Theatre for Young Audiences and recently shared his work in progress at the SDEA Theatre Arts Conference. You might've recently seen him in *Tree of Dreams* or *Migrant Tales*. Offstage, he's probably playing *Avatar* Frontiers of Pandora or sleeping.



MATTHIAS TEH

Weiming

Matthias (he/they) is a multidisciplinary artist in theatre, film and music. They graduated from LASALLE College of the Arts BA (Hons) Acting programme in 2023 with an award in Academic Excellence. Matthias' practice is rooted in a process-based approach and constant discovery through active collaboration, practical exploration and thorough research. As a multidisciplinary artist, they play with different approaches to express the quirks, contradictions, and humanity in all of us, keeping things fun, approachable, and full of joy.



JEOSHUA WANG

Male Understudy

Jeoshua Wang is an actor, writer, and final-year student in the Diploma in Performance at LASALLE College of the Arts. Recently, he made his professional debut in Singapore Repertory Theatre's Shakespeare in the Park: *Macbeth*, and earned his first directing credit as an Assistant Director for The Winter Player's *Much Ado About Nothing*. Fueled by a deep passion for theatre, Jeoshua hopes to contribute to the local scene and ensures he'll always have something to bring to the table.



ADRINA BANG

Female Understudy

Adrina (she/her) is a Malaysian-born Singaporean actor who recently made her professional theatre debut in Singapore Repertory Theatre's Shakespeare in the Park – *Macbeth*. She is currently in her final year of the Diploma in Performance programme at LASALLE College of the Arts, and while her primary focus is acting, her desire for versatility branches into her budding career as a multi-disciplinary theatre practitioner. When she is not on-stage, on-screen or singing in the hallway, you might see her ushering at the Ngee Ann Kongsi Theatre, or find her behind-the-scenes learning the ropes as freelance backstage crew. She also loves a good spreadsheet.



Adrina is thrilled to be making her debut with Gateway Arts, and hopes you leave *Brainstorm* with your heart fuller than it was before.



Meet The Creative Team

SAMANTHA SCOTT-BLACKHALL

Director

Samantha has worked in Singapore's theatre industry for the last 20 years, and achieved critical acclaim as a Theatre Director, Artistic Director and Educator. Along with over 50 productions under her belt, she won Best Director at the *Life!* Theatre Award in 2005 for *The Physicist* by Luna-id Theatre, and has received numerous nominations over the years for the productions she has helmed. Highlights include *Tuesdays With Morrie* by SRT, *A Novel Idea* by Arts House, *Souvenir* and *8 Women* by Sing Theatre, *Agnes of God*, *Popcorn*, *The Lover* and *The Dumb Waiter*, *Quills* by Luna-id Theatre, *Doubt* and *The Car* by Action Theatre. Samantha founded Blank Space Theatre in 2007, which received excellent audience reviews and awards for productions including *Lord of the Flies*, *Das Experiment: Black Box*, as well as *Freud's Last Session* and *Red* (both collaborations with *Esplanade Presents series: "The Studios"*). Samantha works continually as a theatre educator at LASALLE College of the Arts, and has also taught at SOTA (School of the Arts) and NAFA (Nanyang Academy of Fine Arts). In 2020 she took on the role of Artistic Director of Gateway Arts, steering the theatre company that draws attention to social issues faced by children and youth, using theatre as a vehicle to encourage conversations and inspire change. Directorial credits under Gateway Arts include *Smartypants and the Swordfish* (2019/2024), *I and You* (2022/2024) and short musical film *Behind The Wall*.



CHEYENNE ALEXANDRIA PHILLIPS

Script Adapter

Cheyenne Alexandria Phillips is a climate artist, writer, theatremaker and performer. She is also an Associate Artist with Checkpoint Theatre and a Young ASEAN Storyteller. With a degree of Environmental Studies (specialising in Environmental Biology) from the National University of Singapore, Cheyenne uses writing and performance to interrogate how environmental concerns intersect with science, society policy, culture and identity. Her recent work include: *Playing With Fire* (2024), *A Literary Trail of Sungei Buloh Wetland Reserve* (ASEAN Centre of Biodiversity, 2022), *Vulnerable, an eight-part podcast* (Checkpoint Theatre, 2021); *A Grand Design* (Checkpoint Theatre, 2020), *In The Twine: A Tapestry of Stories* (Singapore Writer's Festival, 2018) and *For The Record* (Centre 42's Basement Workshop Residency, 2017).



She also co-wrote *The Last Gardener* with Isabella Chiam (The Theatre Practice, 2024). Cheyenne is also a licensed tour guide.

PETRINA DAWN TAN

Set Designer

Petrina Dawn Tan holds a Master of Art in Collaborative Theatre Production and Design from Guildhall School of Music and Drama in London. She practices scenography and conceptualised a range of projects, including music festivals, circus acts and installations with elements of audience participation.



She won Best Set for *The Truth* (STC - Singapore Theatre Company, formerly Singapore Repertory Theatre) at the 2020 The Straits Times Life Theatre Awards and was nominated in 2025 for Best Set in *Hard Mode* (Checkpoint Theatre), in 2022 for Best Set in *A Dream Under The Southern Bough: Existence* (Toy Factory Productions) and in 2017 for Best Lighting for her work on *Manifesto* (The Necessary Stage & Drama Box). Her work for *Recalling Mother* (Checkpoint Theatre) has been seen internationally, travelling from Singapore to Brisbane and Adelaide. Designs for theatre performances include *Electrify My World* (Nine Years Theatre), *I and You* (Gateway Arts) and *The Son* (Pangdemonium).

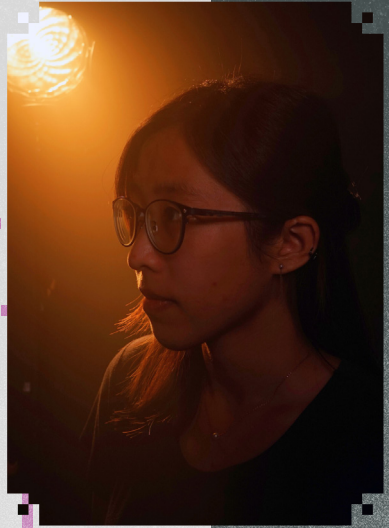
Other credits: Co-Artist for public art "YELLOW" and Associate Lighting Designer for *From Singapore to Singaporean - The Bicentennial Experience*. More at: petrinadawntan.com

CHEE ENQI

Lighting Designer

Enqi Chee is a Singapore-based production artist with a lighting design focus who also moonlights as a creative/technical producer and production manager. Constantly shifting between the different sectors in the arts & entertainment industry, she collaborates with artists and clients in theatre, dance, music, film, and events. Much of her work interweaves design elements from multiple genres, bringing together artistry, technicality and technology, creating works that linger, just that moment longer.

Collaborators in recent years include Dance Ensemble Singapore, JJ Lin, Kit Chan, MICappella, Singapore Management University, So Drama! Entertainment, Stefanie Sun, The Island Voices, amongst others.



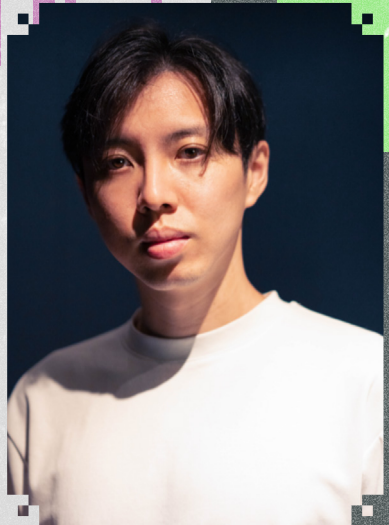
DANIEL WONG

Sound Designer

Daniel Wong is a sound designer, composer and music producer. He graduated from Yong Siew Toh Conservatory of Music with a B.Mus (Hons) in Recording Arts & Science.

Sound design credits include Singapore, *Michigan*; *Doubt: A Parable*; *People Places & Things*; *Muswell Hill (Pangdemonium)*, *Disgraced*; *2:22 - A Ghost Story*; *The Almighty Sometimes*; *Tuesdays with Morrie (SRT)*, *Every Brilliant Thing*; *I And You (Gateway Arts)*, *G*d is a Woman*; *Cafe (Wild Rice)*.

Outside of theatre, Daniel runs a recording studio, where he produces songs for artists and provides audio post production services for films and advertisements.



GENEVIEVE PECK

Multimedia Designer

Genevieve graduated from The Royal Central School of Speech and Drama, London in 2012 with a BA(Hons) in Theatre Practice, specialising in Lighting and Projection/Video Design. Design credits include *Dear Evan Hansen*, *People Places and Things*, *The Glass Menagerie*, *Tango*, *The Effect* (Pangdemonium), *Grounded*, *Lungs*, *The Sound Inside*, *The Lifespan of a Fact* (Singapore Repertory Theatre), *The Commission* (Pangdemonium, SRT & Wild Rice) *All the World's a Sea*, *The Soldier and His Virtuous Wife*, *Four Horse Road*, *I Came At Last To The Seas*, *Lao Jiu*, *Liao Zhai Rocks*, *If There're Seasons* (The Theatre Practice), *ubin*, *Both Sides Now 2019*, *Missing*, *With Time* (Drama Box), *Everything For You*, *Between You and Me*, *Lear is Dead*, *Art Studio* (Nine Years Theatre), *Three Years in the Life and Death of Land* (The Necessary Stage), *The Monster in the Mirror* (Gateway Arts), *Burp*, *Imagination Station* (Esplanade Theatres on the Bay), *Origins Cipher* (Siong Leng Musical Association), *Sides 2022* (Frontier Danceland).



<https://genpeck.myportfolio.com>

Credits

CAST

Qistina	Rohaniah Sa'id (Hani)
Jeffery	Chong Shen Hao
Hannah	Sara Cher
June	Cheryl Lee
Aarav	Kishore Kumar
Weiming	Matthias Teh
Male Understudy	Jeoshua Wang
Female Understudy	Adrina Bang

CREATIVE TEAM

Director	Samantha Scott-Blackhall
Script Adapter	Cheyenne Alexandria Philips
Set Designer	Petrina Dawn Tan
Assistant Set Designer	Michael Lee
Lighting Designer	Chee Enqi
Sound Designer	Daniel Wong
Multimedia Designer	Genevieve Peck

PRODUCTION TEAM

Executive Producer	Priscilla Khong
Production Manager	Sunitha Nayar
Production Coordinator	Abel Koh
Technical Manager	Nur Aliff bin Osman
Assistants to Technical Manager	Faiz Zainuddin
Stage Manager	Joshua Gareth Seow
Assistant Stage Manager	Shawne Koh Yzelman
Assistant Stage Manager (Intern)	Aqiilah Iffah
Wardrobe Mistress	Naomi Thomas
Surtitles Operator	Gabriella Tang / Tricia Wee

GATEWAY ARTS TEAM

MANAGEMENT & ARTISTIC

Executive Director Priscilla Khong
Artistic Director Samantha Scott-Blackhall

PRODUCTION

Production Manager Juraidah Rahman
Production Executive Joshua Gareth Seow
Production Coordinator (Contract) Abel Koh
Production Coordinator (Intern) Aqilah Iffah

PROGRAMMING

Senior Programme Executive Toh Wen Fang
Programme Coordinator Bless Tan

SALES & MARKETING

Sales & Marketing Executive Nadia Affendey
Sales & Marketing Executive Ashley Tan
Sales & Marketing Executive Tan Zi Qin
Sales & Marketing Coordinator Zachary Lim
(Intern)

ADMINISTRATION

Company Manager Doris Lee
Administrator (Part-Time) Lee Ai Leen

SPECIAL THANKS

Onyu Kim

Sponsors and Partners

OUR SPONSORS & PARTNERS

Gateway Arts would like to thank the following Sponsors, Partners, and Donors for their generous support.

Presenting Sponsor



Corporate Sponsor



Digital & Venue Sponsor



Supported By



Honorary Patron



Community Partner



In Support of



Official Caterer



Official Privilege Card



Official Card



In Celebration of SG60, we're a proud partner of SG Culture Pass.



Our Donors

GUARDIANS

With the help of our Guardians, we continue to nurture the next generation of artists and audiences through the performing arts in Singapore.

PROTECTOR

Jonathan & June Ow

GOLD KNIGHT

Cadence Culture

CRIMSON KNIGHT

Meng

Gabriel Lee & Ng Kooi Hoon

Veronica LY Low

WHITE KNIGHT

James

Nurture With Love Suzuki Music School

FRIENDS

With the help of our Friends, we continue to develop meaningful programmes that champion social causes.

Desmond Chua

HengGH

Sherry Lee

Steffanie Lui

Derrick Neo

Stephanie

The Rosen Family

Ws

Lily Chu

Peter Ho

Lew Sin Min

Ming Pang

Ng Bee Ling

Sze Kiang

Sean Too Kai Wen

Cassandra Goh

Vernon Kwek

Don Lim

Mitha Family

Sharon Poh

Jordan Tay

Gaiatri Vijay

We'd Love to Hear From You



[Tell Us What You Thought
About The Show](#)



ABOUT GATEWAY ARTS

Gateway Arts is a not-for-profit Singapore-registered charity. As a theatre company for young people, our mission is to provoke thought, encourage conversations, and inspire change through productions that tackle current social issues amongst children and youth. We believe in nurturing emerging artists, attracting new audiences, and providing underserved communities with meaningful arts programmes.

Make A Difference

Our mission to 'Nurture Performing Hearts' seeks not only to encourage and support the next generation of performing artists in their creative expression, ideas, and ideals, but also to shine a light on current social issues amongst children and youth, through works produced by Gateway Arts that encourage conversation, provoke positive thought, and inspire change for the better.

If you believe, as we do, in the ability of the performing arts to strengthen social relationships and community, fuel conversation, instil values and imbue young people with self-expression, confidence, and charisma, we invite you to become a Friend or a Guardian of Gateway Arts. In doing so, you will be supporting artistic youth who have important things to say, the talent to say it well, and a burning ambition to make a difference.

Gateway Arts is a not-for-profit Singapore-registered charity.

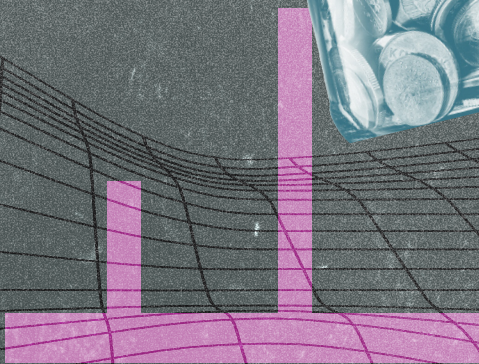
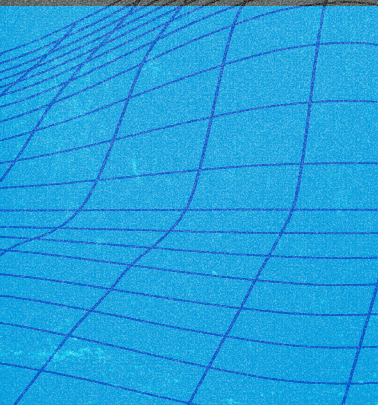
UEN: 201605922E

Effective Date of Registration: 06 July 2023

<https://gatewayarts.sg/support-us/>



[Make A Difference Here](#)



BUILDING A BETTER FUTURE FOR ALL SINGAPOREANS

Who We Are

Singapore Pools was set up in 1968 to counter illegal gambling and provide a legal, safe and trusted avenue for people to place bets. Over the years, we have evolved to keep our games relevant while creating a secure and responsible gaming environment for all.

We are a fully-owned subsidiary of Tote Board, which reports to the Ministry of Finance. Gambling will always exist, and Singapore Pools exists to serve the public good by diverting away from illegal gambling operators and channeling funds towards causes that uplift the lives of Singaporeans.



With every dollar spent at Singapore Pools today, 97 cents is returned to Singapore and Singaporeans in the form of Prize Payouts, Betting Duties & Taxes and Contributions to Tote Board.



Singapore Pools' contributions have helped fund more than 800 community projects, creating widespread impact across Singapore, while also supporting sustainability through eco-friendly initiatives and green community programmes.



Over the past three years, we have completed 6,825 volunteerism hours by 532 unique staff volunteers and achieved a 53% staff volunteerism rate.

SINGAPORE



For Community
Purpose and Benefit

POOLS

Be a part of the distinguished

Lifestyle



SINGAPORE
POLO CLUB
ESTABLISHED IN 1984



SIGN UP FOR A COMPLIMENTARY CLUB TOUR

For membership rates and enquiries, email
membership@singaporepoloclub.org

Gateway Arts' 2026 Season



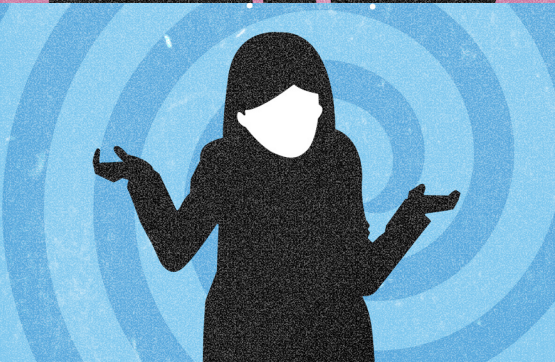
SCAREDY KAT PRESENTS

21– 31 May 2026



THE PARTING GLASS

3 –13 September 2026



HOW TO BE A KID

5 –15 November 2026

