

SmartyPants and the Swordfish

Venue Guide

Getting There

- Driving
- Wheelchair Accessible Vehicle
- Taking the Bus
- Taking the MRT
- Taking a Coach
- Taking a Taxi

Pages 3 - 18

Pages 5 - 6

Page 7

Pages 8-12

Pages 13-14

Page 15

Pages 16-17

About the Building

Pages 19 - 20

Welcome!

Thank you for choosing to watch ***SmartyPants and the Swordfish!***

This visual story helps you to prepare for this experience.

If you have any questions, please contact us at nurarina@artdis.org.sg



Getting There

What?

You are going to watch a theatre performance by ART:DIS Singapore and Gateway Arts.

The show title is ***SmartyPants and the Swordfish***.

It is a relaxed performance. This means that the lights and sounds are gentler, and you can leave at any time if you need a break.

When?

20 - 24 March 2024

The show is 1.5 hours long.

Where?

Gateway Theatre

Black Box (Level 8)

3615 Jalan Bukit Merah

Singapore 159461



Getting There

Head to the Registration Table at the Passenger Lift Lobby on Level 1 to find out where you should go next.
Refer to slide 18 for more information.



This is Gateway Theatre.



The show is at the Black Box on Level 8.



You can also reach the Black Box through the stairs on Level 7.

Driving



Cars can be parked at the multi-storey carpark at Blk 163 Bukit Merah Central, S(150163).

It is around a 2 minute walk to Gateway Theatre.

Driving



Cars can also be parked at Blk 119 Bukit Merah Central, S(150119).
It is around a 3 minute walk to Gateway Theatre.

For more information, please refer to <https://gatewaytheatre.sg/getting-here/>

Wheelchair Accessible Vehicles



Drive to Gateway Theatre:
3615 Jalan Bukit Merah,
S(159461)

Only wheelchair accessible vehicles can drop off and pick up directly at Gateway Theatre.

Please let us know your car plate number beforehand at nurarina@artdis.org.sg so we can raise the gantry for you.



Turn left after Gateway Theatre



Turn left again

Taking the bus

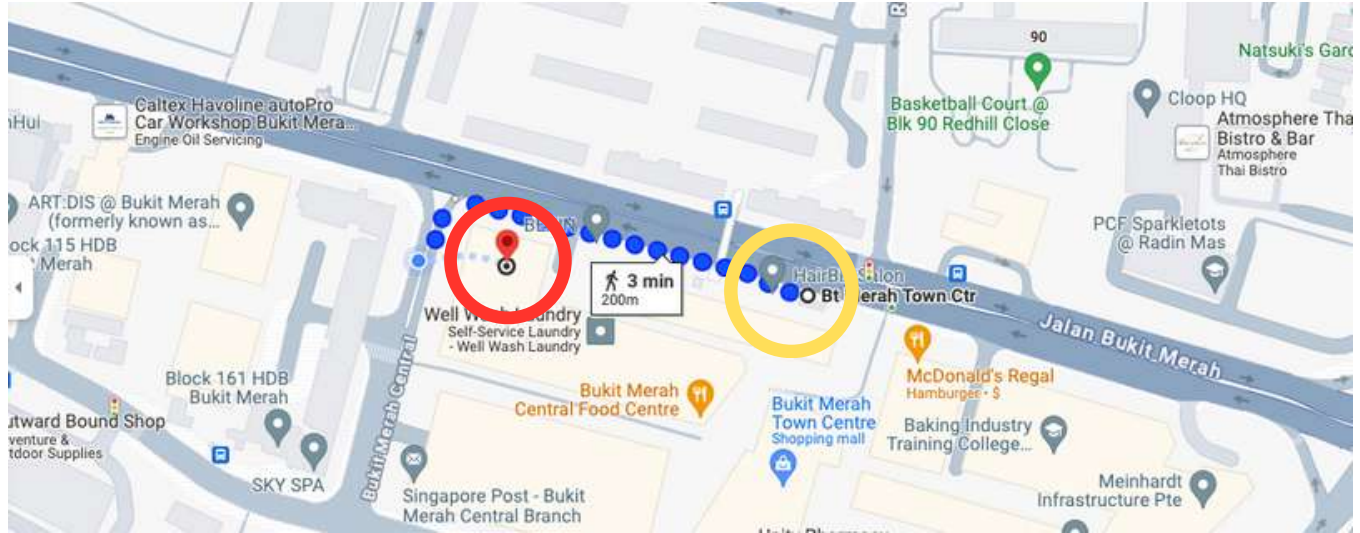


The nearest bus stop is Bukit Merah Town Centre (Stop ID: 10091). It is in front of Brinda's (blue shop).

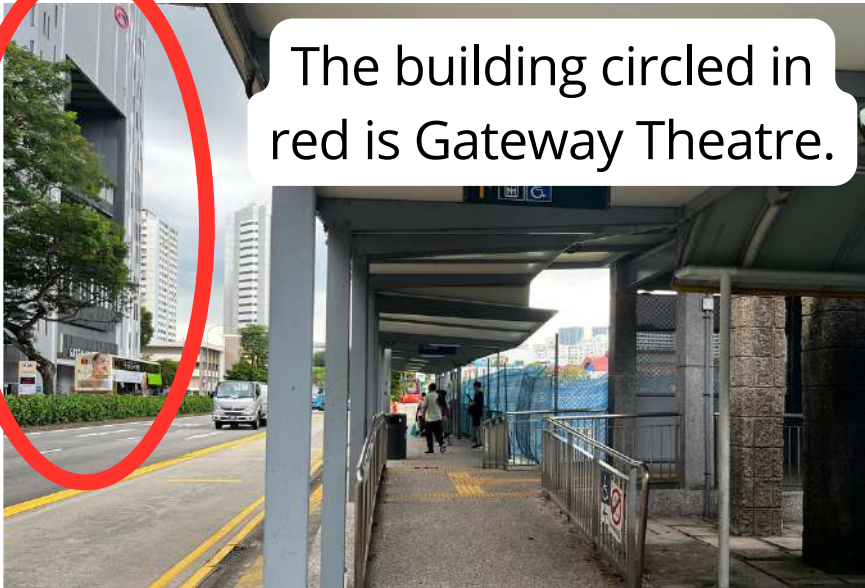
Turn left and walk to Gateway Theatre. It is around a 3 minute walk away.



This building circled in red is Gateway Theatre.



Taking the bus



The building circled in red is Gateway Theatre.

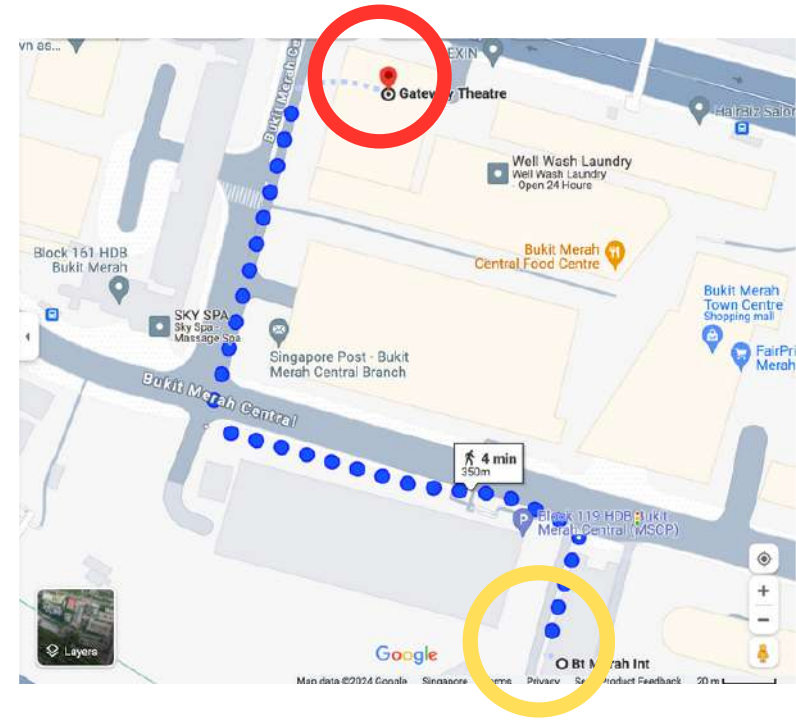


This is what the bus stop looks like. You will pass Subway and KFC as you walk towards Gateway Theatre.

Another bus stop is Opposite Bukit Merah Town Centre (Stop ID: 10099).

Cross the overhead bridge (using the lift or stairs), turn right and walk towards Gateway Theatre. It is around a 4 minute walk away.

Taking the bus



This is what Bukit Merah Interchange looks like.

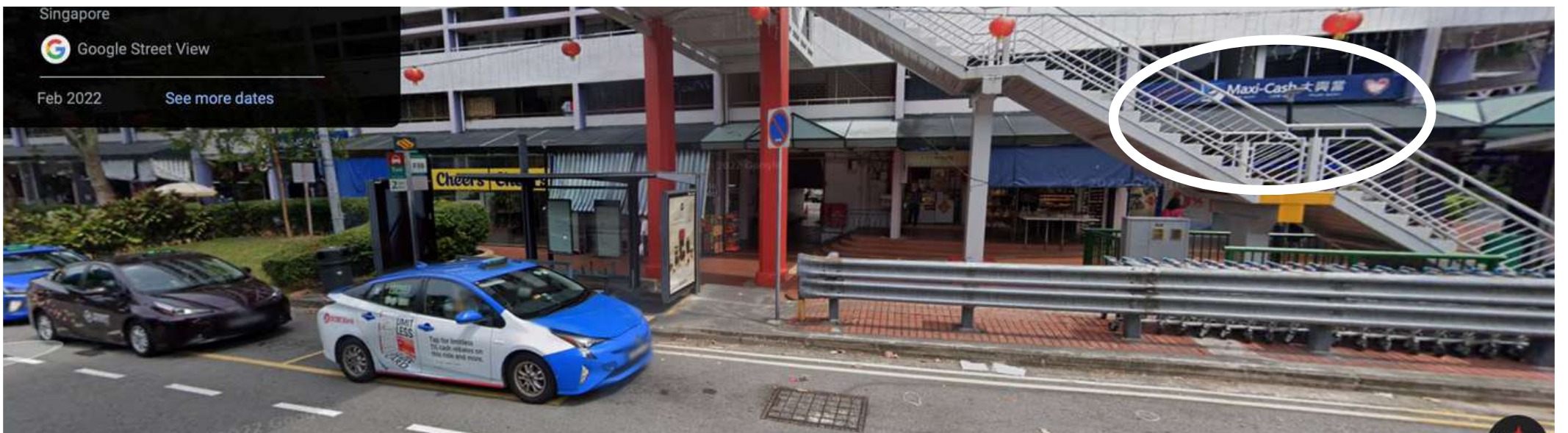
Another bus stop is Opposite Bukit Merah Interchange (Stop ID: 10009). It is around a 4 minutes walk away.

See the next few slides for more instructions.

For more information, please refer to <https://gatewaytheatre.sg/getting-here/>

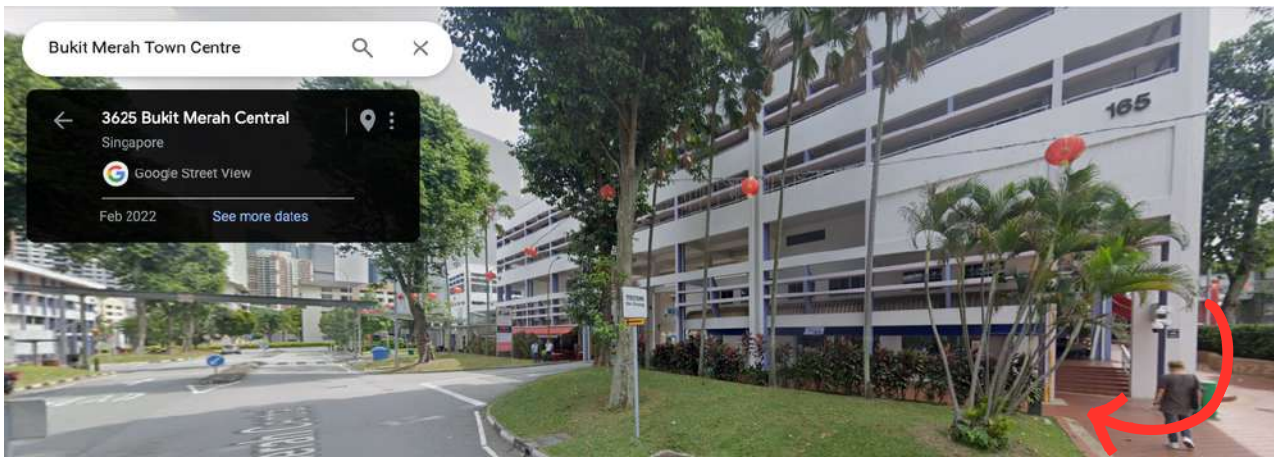
Getting There

1. From Bukit Merah Bus Interchange, cross over to Bukit Merah Town Centre using the escalator.
2. Keep going straight past Maxi-Cash, the coffee shop, and so on.

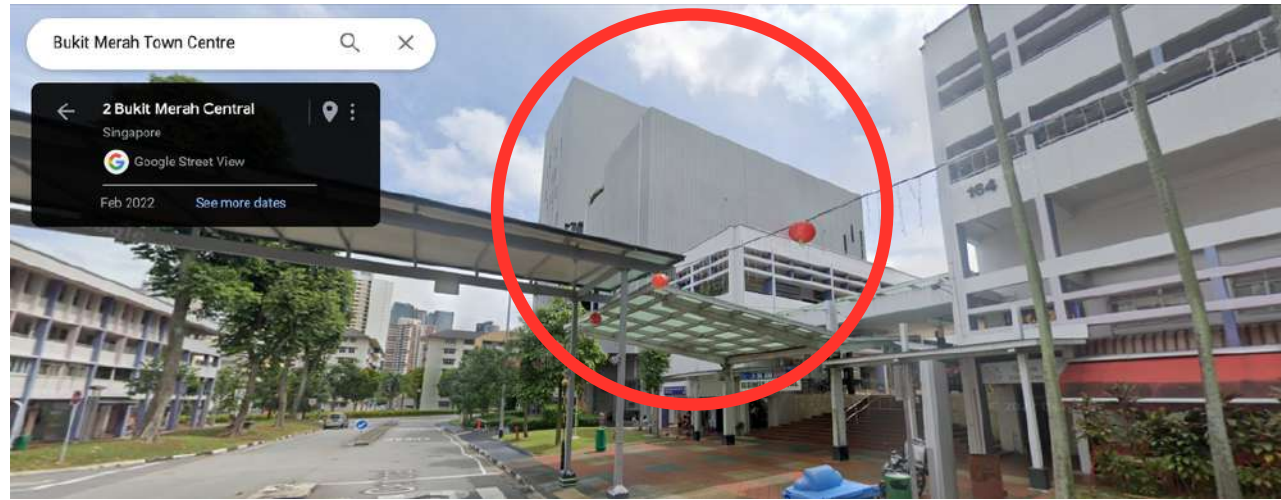


For more information, please refer to <https://gatewaytheatre.sg/getting-here/>

Getting There



1. Turn right at Blk 165.
2. Walk straight, past Singapore Post, until you see Gateway Theatre.



The building circled in red is Gateway Theatre.

Taking the MRT



Add media

1:48 PM ○ Redhill Stn

1:48 PM ○ Redhill Stn

🚌 **132** Bt Merah
 ^ 7 min (5 stops) · Stop ID: 10209

1:50 PM ○ Delta Swim Cplx

1:50 PM ○ Blk 104a CP

1:52 PM ○ Opp Blk 95c

1:52 PM ○ Blk 116

Service run by [SBS Transit](#)

1:55 PM ○ Bt Merah Int

🚶 Walk
 v About 4 min, 350 m

1:59 PM ● Gateway Theatre

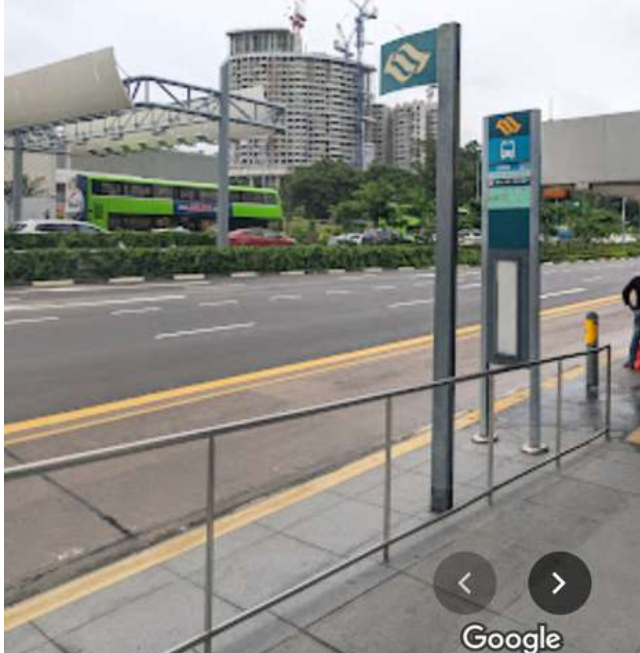
EW18
Redhill
 红山 | ரெட்ஹில்

Take Bus 132 from Redhill Station (Stop ID: 10209) and alight at Bukit Merah Interchange (Stop ID: 10009).

It will take around 11 minutes to reach Gateway Theatre.

Refer to the previous slides on how to get to Gateway Theatre from Bukit Merah Interchange.

Taking the MRT



147 961M

1:53 PM ○ **Outram Park**
Outram Rd, Singapore 169037

Walk
About 1 min, 180 m

1:53 PM ○ **Outram Pk Stn Exit 4**

147 Clementi
13 min (8 stops) · Stop ID: 05069

2:06 PM ○ **Bt Merah Town Ctr**

Walk
About 3 min, 200 m

2:09 PM ● **Gateway Theatre**
3615 Jalan Bukit Merah, Singapore

EW16 NE3 TE17

Outram Park

欧南园 | ஊட்ரம் பார்க்

Take bus 147 or 961M from Outram Park Station Exit 4 (Stop ID: 05069) and alight at Bukit Merah Town Centre (Stop ID: 10091)

It will take around 16 minutes to reach Gateway Theatre.

Refer to the previous slides on how to get to Gateway Theatre from Bukit Merah Town Centre.

Taking a coach



The coach will drop you off in front of the building.

For more information, please refer to <https://gatewaytheatre.sg/getting-here/>

Taking a taxi



The building circled in red is Gateway Theatre.



The taxi might drop you off at Bukit Merah Central Food Centre, right next to Gateway Theatre.

For more information, please refer to <https://gatewaytheatre.sg/getting-here/>

Taking a taxi



The taxi might also drop you off at the side of Gateway Theatre.
Turn right to go to the front of the building.

For more information, please refer to <https://gatewaytheatre.sg/getting-here/>

Getting There

When you arrive at Gateway Theatre, turn left and walk towards the Passenger Lift Lobby.

There will be a Registration Table in front of the lifts. The staff there will let you know the level you should go to next.



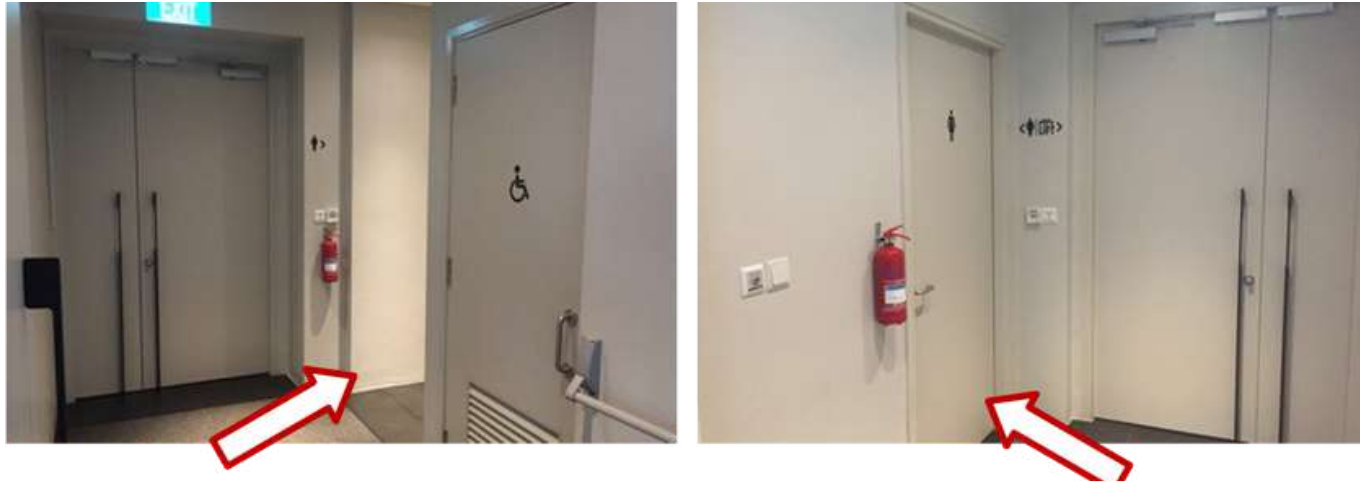
Turn left



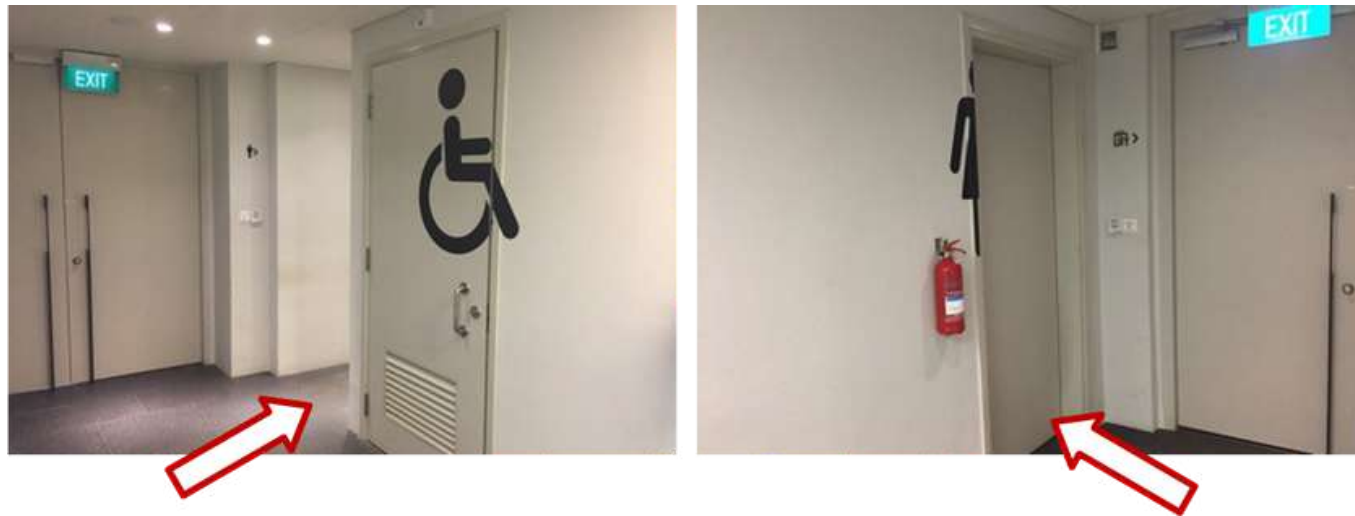
Passenger Lift Lobby

About the Building

The show is at the Black Box on Level 8, but there are no toilets there.



You can use the toilets on Level 4 (bottom) or 7 (top).



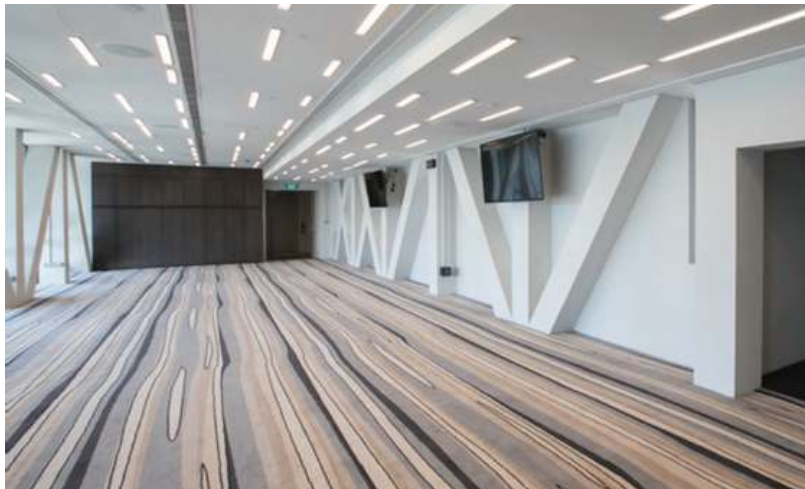
The female toilets are next to the door leading to the passenger lifts.

The male and accessible toilets are next to the door leading to the service lift.

Calm Rooms can be found on Level 4 and 7.

Fidgets and ear defenders are available in these spaces.

The Calm Room on Level 7 can get noisy before the show while people are waiting to go into the Black Box for the show.



The Calm Room on Level 4 includes an outdoor and indoor area to choose from.

